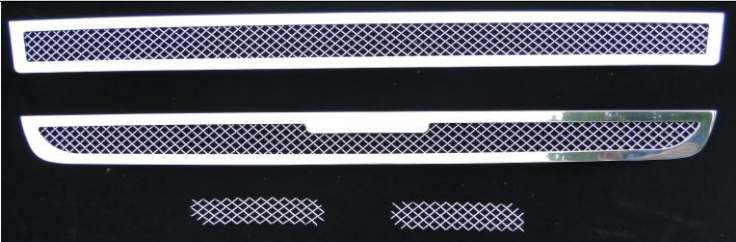
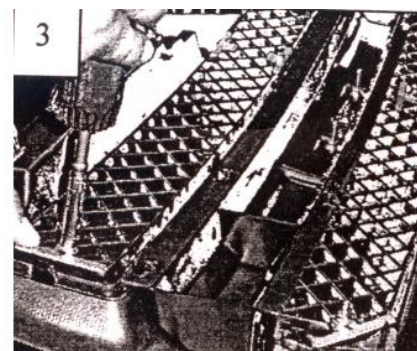
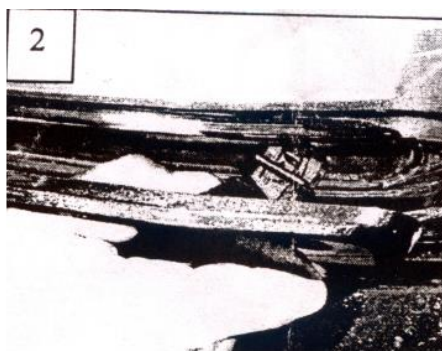
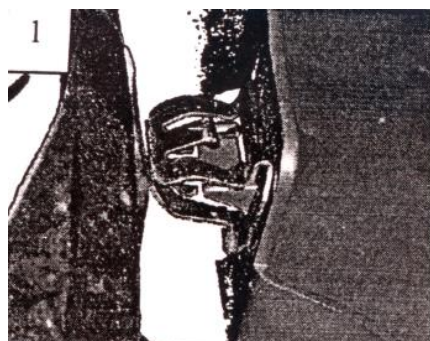


Part#	GR03GFD6 8T	Application	For 2006-2009 Chevy Trailblazer SS Main Upper
-------	----------------	-------------	--

Parts List	Item	Part Name	QTY	Description	Item	Part Name	QTY	Description
	1	Mesh Grille	4	Stainless steel	5	Slotted T Brackets	7	
	2	Washers	7		6	Screws	7	6-32×1"
	3	Phillips Screws	4	8#×3/1"	7	Nylon Lock Nuts	7	6-32
	4	Flat Nuts	4	8#				

Install Notes: Overlay Replacement Drill Cut

Step	Description	illustration
1	Identify the grille & hardware with parts list.	
2	Pop hood, remove the black plastic cover (on top of OEM grille / front panel) from vehicle. This will allow access to the rear of the grille shell.	
3	Use a Slotted screwdriver to release the clips along the back of the grille(1). Lightly pull grille forward; release the clips in the center and along the bottom. Two clips remain on each end of the grille(between headlamps and signal lamps). Wrap a slotted screwdriver with a rag to prevent scratching; then pry the clips loose(2).	
4	Thread a stud in each nut weld to the grille. Center the upper grille and install the slotted T brackets(3). Secure the brackets with the washers and nylon lock nuts. Center the bottom grille and install center slotted T brackets. Install a T bracket on each end; Tighten the hardware.	
5	The factory side vents in the grille must be removed from the cross bar to install the inserts. Drill the factory rivets from the inner holes on the vents; slide the plate out. Center the new mesh inserts in front of factory vents; re-center the vent with the mesh insert in front. Install two 8# phillips screws and flat nuts. Check the alignment of the inserts; tighten the hardware	
6	Make sure the billet grille is centered and tighten the fasteners. but do not over-tighten.	
7	Reinstall the black plastic cover which was removed in step 2.	
8	Installation completed!!!	



The instruction here is for your reference only. You may need to bend the billet grille bars or tabs a little bit to adjust to fit. We strongly recommend the professional installer for best result. Please use masking tape and tape the OEM grille shell along the edge to protect your vehicle during installation. We are not responsible for any damage caused by the installation. Thank you for choosing our product!