



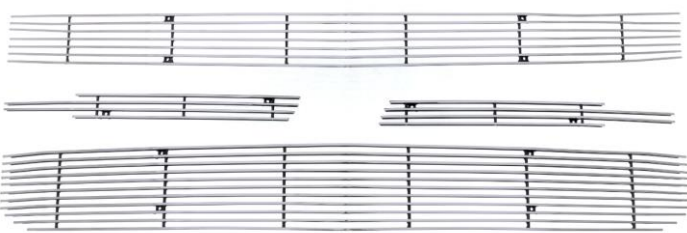
Grille Installation Instruction

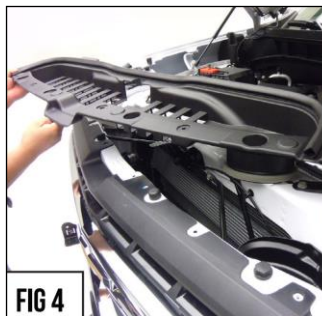
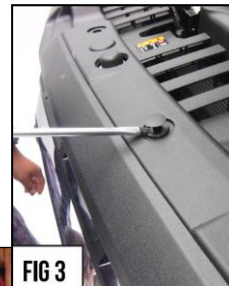
Rev. 191101

Part#	GR03FEF55 A/H	Application	For 2019-2020 Chevy Silverado 1500 Main Upper Not for Custom Trailboss/Custom/Work Truck
--------------	--------------------------	--------------------	---

Parts List	Item	Part Name	QTY	Description	Item	Part Name	QTY	Description
	1	Billet Grille	4	Aluminum	4	U-Clip Nut	12	8#
	2	Screws	10	8# x2 "	5	Tabs	12	
	3	Screws	2	8# x2.5 "				

Install Notes: Overlay Replacement Drill Cut

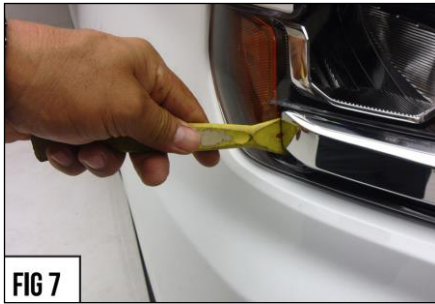
Step	Description	illustration
1	Identify the grille & hardware with parts list.	
2	Turn off engine, chalk tires with stop block, open the hood and disconnect the battery. Prepare the vehicle by setting a protective layer of Blue Masking Tape (3M Painters Tape or similar) over the head lamps, grille cross bar, and along the lower bumper that is in close proximity to the grille. (Fig 1)	
3	The OEM Factory Grille will have to be removed. Begin grille removal unscrewing the Hood release latch handle. (Fig 2)	
4	Next, begin prying free all the Push Pin Retainer Clips and remove the radiator cover. With the Radiator Panel Cover removed, Identify and remove the screws that secure the top trim / grille frame. Pry the trim piece up and off the core support lip. (Fig 3-6)	



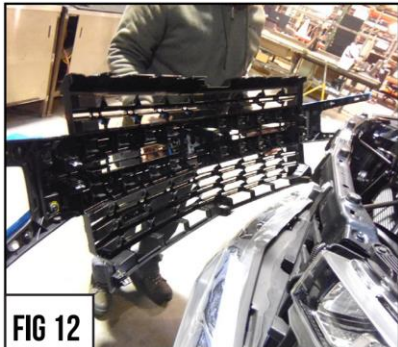
The instruction here is for your reference only. You may need to bend the grille a little bit to adjust to fit. We strongly recommend the professional installer for best result. We are not responsible for any damage caused by the installation. Thank you for choosing our product!

Part#	GR03FEF55 A/H	Application	For 2019-2020 Chevy Silverado 1500 Main Upper Not for Custom Trailboss/Custom/Work Truck
-------	--------------------------	-------------	---

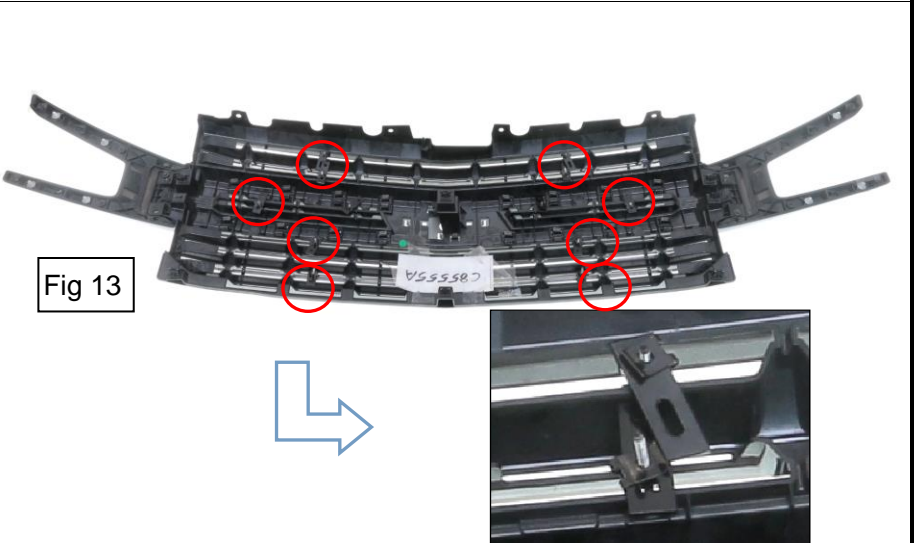
- 5 Remove Vehicle's Grille Cross Bar by carefully prying on the end "finger piece". Note the protective layer of masking tape in Figures #8 & #9. (Fig 7-9)
- 6 Work the prying tool towards the center. Figure #9b shows the plastic fastener on the inside of the cross bar. (Fig 8-9)
- 7 Repeat on opposite side.



- 8 Before you can separate the Vehicle's Grille Assembly, you must pry off the retainer clips located behind grille near bottom corners. Use a long prying tool with a large broad edge to depress and pop free from fastener. (Fig 10-11)
- 9 With the OEM Grille free and removed from vehicle, place face down on a padded surface. (Fig 12)



- 10 Hold the billet grille against the OEM grille shell. Place screws through aluminum tabs on front of the grille. Secure billet grille using the flat tabs and U-Clip nut from the back side of the OEM grille shell. (Fig 13)



The instruction here is for your reference only. You may need to bend the grille a little bit to adjust to fit. We strongly recommend the professional installer for best result. We are not responsible for any damage caused by the installation. Thank you for choosing our product!

Part#	GR03FEF55 A/H	Application	For 2019-2020 Chevy Silverado 1500 Main Upper Not for Custom Trailboss/Custom/Work Truck
11	Carefully inspect your work regarding the Grille installed on the Vehicle's OEM Grille.		
12	Take the assembled grille component and put into place to install onto vehicle. Re-install in the reverse order from which it was removed. Start at the bottom and work your way up. Re-install the radiator cover & Hood Latch Handle too.(Fig 14-16)		
 <p>Fig 14</p>		 <p>Fig 15</p>	 <p>Fig 16</p>
13	Carefully inspect your work and make certain all vehicle panels have been installed and align correctly as factory fitment.		
14	Installation completed!!!		

The instruction here is for your reference only. You may need to bend the grille a little bit to adjust to fit. We strongly recommend the professional installer for best result. We are not responsible for any damage caused by the installation. Thank you for choosing our product!