



PATENT PRODUCT

Grille Installation Instruction

Rev. 200701

| | | | |
|--------------|------------|--------------------|-----------------------------------|
| Part# | GR03FAJ15J | Application | For 2008-2012 Chevy Malibu |
|--------------|------------|--------------------|-----------------------------------|

| Parts List | Item | Part Name | QTY | Description | Item | Part Name | QTY | Description |
|-------------------|------|------------------------|-----|-----------------|------|-----------|-----|-------------|
| | 1 | Billet Grille | 2 | Stainless steel | 4 | bolts | 12 | 6-32 |
| | 2 | K-Lock Nuts | 12 | 6-32 | 5 | Flat Tabs | 4 | |
| | 3 | Powder Coated Brackets | 4 | | | | | |

Install Notes: Overlay Replacement Drill Cut

| Step | Description | illustration |
|-------------|--------------------|---------------------|
|-------------|--------------------|---------------------|

- | | | |
|---|--|--|
| 1 | Identify the grille & hardware with parts list. | |
| 2 | Remove the plastic push clips from the top side of the front fascia and the plastic filler panel. Figure 1 | |
| 3 | Remove all of the small bolts from the top side of the front fascia and the plastic filler panel. Figure 2 | |

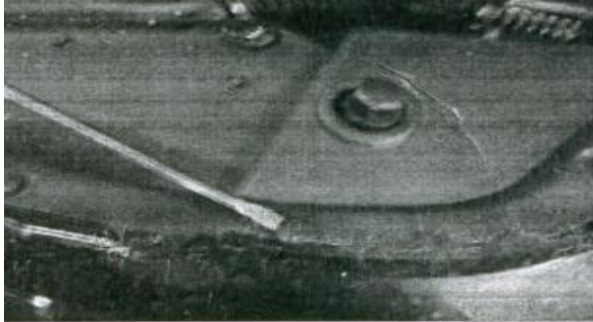


Figure 1

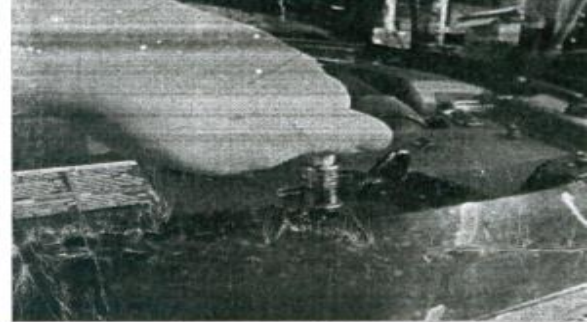


Figure 2

- | | | |
|---|--|--|
| 4 | Once all of the clips and bolts are removed it is now time to remove the plastic filler panel. | |
| 5 | Remove the small bolts and clips that attach the inner wheel well panel to the edge of the front fascia. | |
| 6 | When the inner wheel well panel is free from the front fascia remove the 10mm bolts from each side of the fascia. Figure 3 | |
| 7 | Remove the small bolts that attach the lower filler panel from the bottom side of the front fascia. | |
| 8 | Gently release each side of the front fascia from the vehicle by pulling on the side of the front fascia near the fender. Figure 4 | |



Figure 3



Figure 4

- | | | |
|---|---|--|
| 9 | Release the upper section of the front fascia by gently pulling up on the section near the fender and the headlight. Figure 5 | |
|---|---|--|

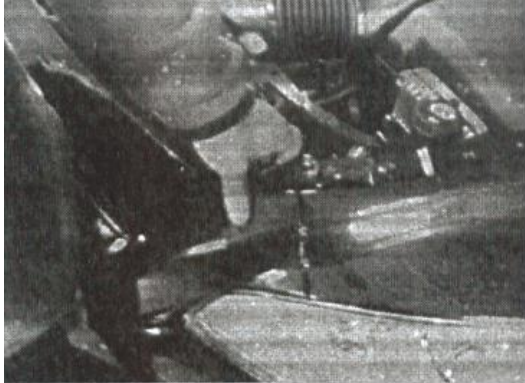
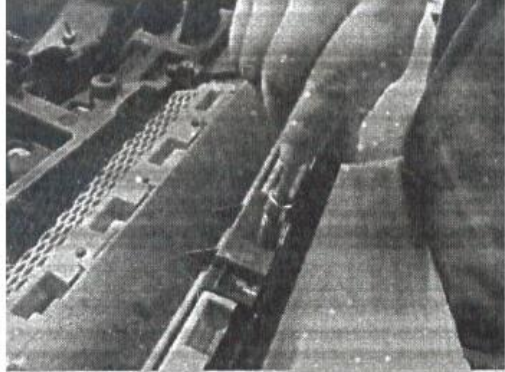
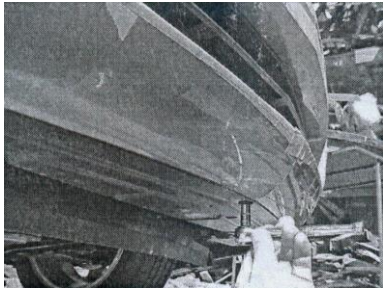
The instruction here is for your reference only. You may need to bend the grille a little bit to adjust to fit. We strongly recommend the professional installer for best result. We are not responsible for any damage caused by the installation. Thank you for choosing our



PATENT PRODUCT

Grille Installation Instruction

Rev. 200701

| Part# | GR03FAJ15J | Application | For 2008-2012 Chevy Malibu |
|--|---|--|-----------------------------------|
| 10 | Gently rock the front fascia forward allowing enough room to access the rear of the grille shell opening. | | |
| 11 | Install the fully threaded bolts into the backside of each of the billet grilles. | | |
| 12 | Center the lower billet grille into the lower factory grille shell and hold in place. It may be necessary to adjust the fully threaded bolts so that they pass through the factory grille. | | |
| 13 | Place the flat tabs over the fully threaded bolts and secure using the k-lock nuts. | | |
| 14 | Remove the top bolts that secure the black panel to the upper grille shell. Rock the panel down to gain access to the backside of the grille shell. Figure 6 | | |
|  | |  | |
| 15 | Center the upper billet grille into the upper grille shell and hold in place. Place the flat tabs over the fully threaded bolts and secure using the k-lock nuts. Reattach the black panel using the factory hardware removed in step 13. Rock the front fascia back into position on the vehicle and lock into place. Reinstall of the factory hardware that was removed in steps 1-6. | | |
| 16 | <p>Move on to the bottom piece. Remove the five small bolts that attach the plastic filler panel to the lower side of the bumper. Install the fully threaded bolts into the threaded tabs on the backside of the billet grille. Center the billet grille into the factory bumper opening and hold in place. Place the powder coated brackets over the fully threaded bolts and hold in place using the k-lock nuts. Re-center the billet grille into the opening and secure all hardware. Reattach the plastic filler panel to the lower side of the bumper using the factory hardware.</p> |  | |
| 20 | Make sure the billet grille is centered and tighten the fasteners. | | |
| 22 | Installation completed. | | |

The instruction here is for your reference only. You may need to bend the grille a little bit to adjust to fit. We strongly recommend the professional installer for best result. We are not responsible for any damage caused by the installation. Thank you for choosing our