

For Ford Pocket Style Fender Flares Set of 4

FEATURE

High quality injection molding fender flares

Made from light weight impact resistance Polypropylene, non-cracking, non-warping, 100% UV-resistant.

Professional installation is always recommended

Step 1 Before Installation

A.Fit: Fit of the flare to vehicle should be confirmed. Some filing, sanding, or cutting may be adopted for proper fit if necessary.

B.Painting: (optional) if paint is desired it must be done prior of installing flares on vehicle. Clean outer surface with a good grade degreaser.

C.Metal protection: Rust resistance paint of all exposed fasteners and bare metal should be done BEFORE installing flares. Undercoating the inner fender wells should be done AFTER flare attachments have been completed.

D.Flares may interfere with existing decals on vehicle. If you wish. Remove decals prior to installation of flares.

TOOLS FOR EASY INSTALLATION

- Utility Knife
- Electric Drill
- 1/4" Drill Bit
- #2 Phillips Driver
- 1/2" Wrench
- Socket Wrench
- 7/32" Socket
- 10 mm Socket
- Grease Pencil

Hardware Kit:

1.



SW1-0067,
5/16 x 18 x 3/8"
SS Torx Screw,
38 pcs

2.



WA1-0012,
.320 x .700 x .03
SS Washer,
38 pcs

3.



NU1-0019,
5/16-18 Jam Fin.
Nylock Nut,
38 pcs

4.



SW1-0052,
T-45 Torx Bit,
1 pc

5.



GP1-0005,
Large Wiper Style
Edge Trim,
360 inches

6.



CL1-0011,
10A-4 Magni
Black Clip,
2 pcs

7.



CL1-0009,
Long "U" Clip,
Magni 565
12 pcs

8.



MT1-0014,
1" x 1.5" x .01"
Black Tab,
12 pcs

9.



RV1-P001,
1/4" Black Nylon
Retainer,
8 pcs

10.



SW1-0058,
#10 x 5/8" Phillips
SS Truss Screw,
14 pcs

11.



ET1-0002,
Edge Trim Tool,
1 pc

Component List:



Front Left
Flare



Front Right
Flare



Rear Left
Flare



Rear Right
Flare



Front Left
Inner Piece

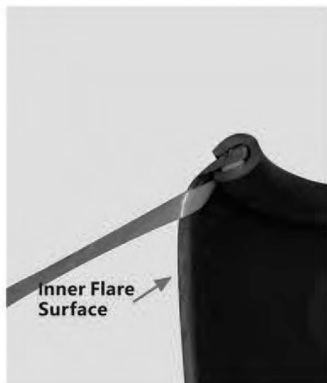


Front Right
Inner Piece

STEP 2 - EDGE TRIM INSTALLATION

A. Peel two to three inches of red vinyl backing away from Edge Trim (GP1-0005) tape. Applying the adhesive side of the edge trim to the inner side of the flare, affix the edge trim to the top edge of the flare (the portion that comes in contact with the vehicle).

B. Press edge trim into place along the top edge of the flare in one-foot increments, pulling red vinyl backing free as you continue to work your way around the top edge of the flare.



Pocket Hardware Installation:



Put a Washer (WA1-0012) on each Bolt (SW1-0059).



Put each Bolt/Washer combination through a pocket hole in the flare.



Place a Nut (NU1-0019) over the end of each Bolt and tighten.

Front Flare Installation Procedures (Driver's Side):



Remove three factory screws with a 7/32" socket wrench. Save screws for reinstallation.



Install Clip (CL1-0011) over fender wheel well lip. See step 6.



Place Clip (CL1-0011) over existing factory hole.



Line up the holes in the inner piece with the two uppermost factory holes and the Clip (CL1-0011). **NOTE:** Driver's side inner piece is marked with an "L" and passenger's side inner piece is marked with an "R".



Using a Phillips screw driver, start a factory supplied screw through center hole in inner piece and through the Clip (CL 1-0011) over the fender wheel well lip.



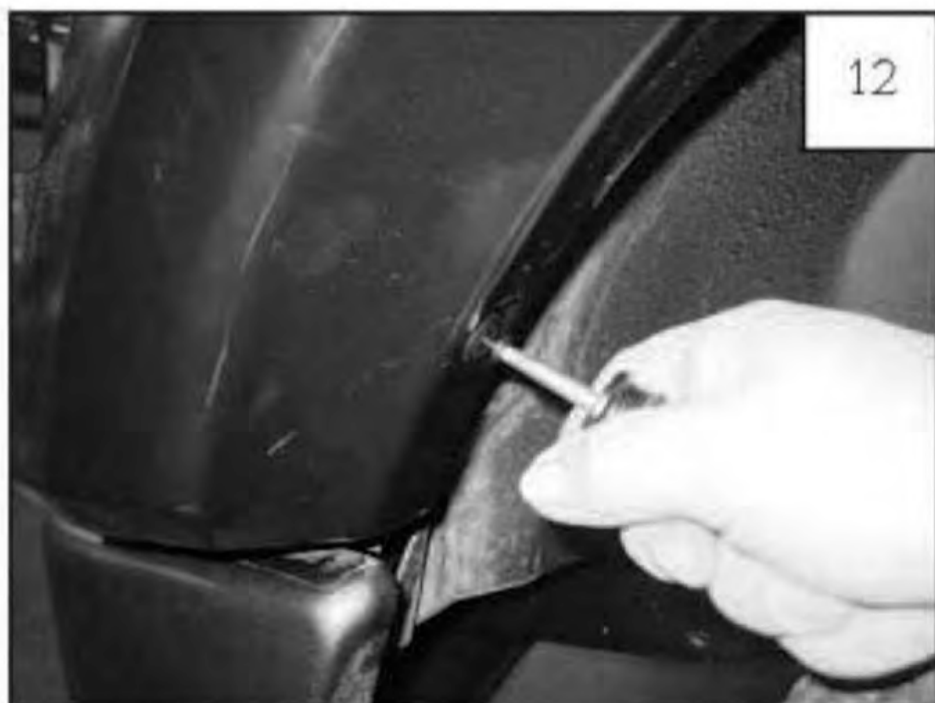
Using a 7/32" socket wrench, reinstall the factory screws through the inner piece.



Position and hold flare on fender and reinstall rear most factory screw using a 7/32" socket wrench.



Still holding flare in position on fender, drill through bumper cover with a 1/4" drill bit using the forward most hole in the flare as a guide.



Still holding flare to fender, install Retainers (RV1-P001) using a Phillips screw driver. See step 13.



Retainer (RV1-P001) locations.



Completed front flare installation.

Rear Flare Installation Procedures (Driver's Side):



Remove two factory bolts with a 10 mm socket wrench. *Save for reinstallation.*



Hold flare to vehicle and mark the location with a grease pencil of the six holes in the flare.



Wrap a Tab (MT1-0014) around the wheel well sheet metal, centered over each of the six marks made in Step 16.



Install a Clip (CL1-0009) over each of the six Tabs (MT1-0014) placed on the sheet metal in Step 17.



19

Hold flare to vehicle and start Screw (SW1-0058) through the two topmost holes in wheel well. Then start Screws through remaining four holes in flare. Tighten all Screws.



20

Using a 10 mm socket wrench, reinstall factory bolts.



21

Completed rear flare installation.

Edge Trim Tool Procedures:



22

Using supplied Edge Trim Tool (ET1-0002), seat edge trim against vehicle by hooking curved end under edge trim at one end of flare. Next, slide around outer edge of flare to the other end.



23

Using flat end of supplied Edge Trim Tool (ET1-0002), seat edge trim against flare by inserting straight end between edge trim and flare at one end. Next, slide around entire edge to the other end.